

# The Osprey

Summer 2016 through Summer 2017



## Upcoming Events

- Meeting with Mashpee Land Stewards in Fall
- Installation of bat boxes in spring 2018
- Creating new pollinator gardens
- Beautifying Santuit Pond Preserve parking lot
- YouTube videos of Trail Systems on MashpeeTV and our Department website
- Partnering with LL Bean and the Friends of the Mashpee National Wildlife Refuge Group



## Conservation Department: Quick Update

- The Assistant Conservation Agent, Katelyn Cadoret, is now full time.
- Mashpee Land Stewards now has a Facebook page.
- Americorp and various after-school groups assisted in maintaining our trail systems and pollinator gardens.
- The Environmental Club in Mashpee High School painted bat boxes built by Eagle Scouts and will install next school year
- Quashnet After-School Program kids made bird feeders out of milk jugs and twine with donated seed from Waquoit Feed Store.
- Friends of the Mashpee National Wildlife Refuge secured funding for new trail maps and to publish a book on its history.
- Newly-acquired conservation parcels include areas on Blue Castle Drive, Clipper Ship Village properties, and two additional parcels within the Johns Pond Conservation Area (Littleford properties).
- The Town of Mashpee Trail Guide is now updated and available online or at Mashpee Town Hall (outside the Conservation Office or Town Clerks Office).
- The Upper Quashnet River Restoration will be surveyed by Horsley-Witten Group, with the final goal to re-establish cold water fisheries.
- Sea-Run Brook Trout Coalition has stocked Santuit River with 45 trout from Mashpee River to try and re-establish the extirpated population in this river, while introducing woody debris into the river to create better spawning habitat through riffle creation and scouring conditions.
- DPW is seeking grant funding to replace the undersized culvert at Sampsons Mills Road, to facilitate sediment transport and restore flow for Santuit River.
- Santuit Pond Preserve is a great place to explore, especially with the new signage and marked trails that help to navigate the labyrinth of abandoned bogs. This and many other trail systems also have maps at their respective kiosks
- Although we secured the grant funding, we were unable to sign the contract for the Mass Department of Fish and Wildlife Habitat Management Grant to restore a bog at Santuit Pond Preserve to waterfowl habitat, due to time constraints.

# IMPROVEMENTS TO CONSERVATION AREAS:

## AMERICORP PROJECTS 2016-2017

**Besse Bog:** Re-established and re-routed a very overgrown trail. There is a certified Vernal Pool off of the main parking area.



**Santuit Pond Preserve:** Cut back overgrown trails; added directional signage; added trail steps and markers



**Pickerel Cove and Pollinator Garden:** Weeded gardens, built and added new pollinator boxes/stem bundles, added painted rock labels



**Jehu Pond Pollinator Garden:** Weeded gardens, built and added new pollinator boxes



**Community Garden Pollinator Garden:** Weeded gardens, built and added new pollinator boxes



**Mashpee River Walk:** Cleaned MAN-MADE TRASH out of Mashpee River in anticipation of the Herring Run season, leaving woody debris in the river.



**Mashpee River Woodlands: Main Property.** Steps created to deter runoff/safe passage for hikers on Long River trail.



**Mashpee River Woodlands John Johansen & Desrosiers:** Cleared trail, removed trash, added trail markers.



**Washburn Pond:** Cleaned up trash near pond.



## EAGLE SCOUT PROJECTS 2016-2017

**Mashpee Herring Run:** Removal of Japanese Knotweed/Mutli-flora Rose (invasives).



*Callan Alfield*

**Johns Pond:** Koi Fishing (invasive fish).



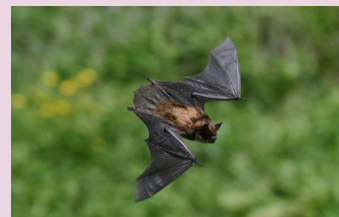
*Christian Cotton*

**Santuit Pond Preserve:** Creating Recreational Beach Area.



*Patrick Flynn, Nicholas Dostilio*

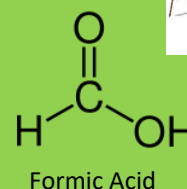
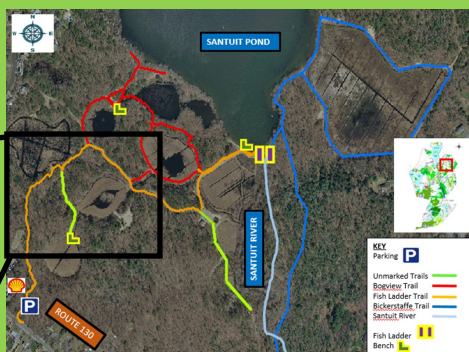
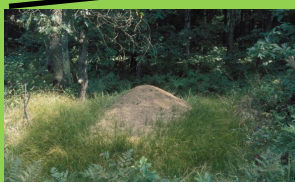
**Throughout Town:** 12 Bat Boxes Built.



*Austin Moloney, (Mashpee Environmental Club)*

## Featured Creature: ALLEGHENY MOUND ANTS

Allegheny mound ants, native to the Eastern Atlantic Coast in North America, can be found right here in Mashpee! Many large colonies have formed within the ***Santuit Pond Preserve*** pathways, and are identified by their numerous, large dirt mounds dotted along the periphery. As with most ant species, they have an extremely complex social structure. There may be multiple queens, and sometimes one will leave to create their own nests nearby, which is arguably a continuation of the same colony. Among other ants in the genus *Formica*, they utilize formic acid as a defense mechanism when the colony is threatened through biting. Specific to this species, Allegheny mound ants also inject the formic acid into the roots of surrounding vegetation to kill it, and therefore outcompetes them for sunlight used to warm the ants and their larvae. These ants eat other ant species and scaled insects.





**RE-PAINTED VANDALIZED KIOSK AT MASHPEE RIVER WOODLANDS,**



**BEFORE**



**AFTER**





Bundle of Bamboo Stems for Nesting Pollinators. The natural nodes form the back of the tunnel. The stems of the invasive perennial, Japanese Knotweed, can also be used.



New pollinator nest boxes, (replaced old boxes.). We still keep the old boxes for larvae that may take more than one season to hatch (called parsivoltine). One can see mud or leaves caked into the holes, used by species such as leafcutter bees or mason bees.



Sweet Pepper Bush (*Clethra alnifolia*) blooms come out in August, and have a wonderful, sweet aroma as suggested by the name. The seed heads resemble peppercorns, and can be observed throughout winter and spring.



Tickseed, cranesbill, and butterfly milkweed at the Community Garden Pollinator Gardens. (below)



## POLLINATOR GARDEN UPDATE

Our three pollinator gardens are flourishing, and are maintained annually through Americorp, Mashpee Land Stewards, the Friends of the Mashpee National Wildlife Refuge, DPW and other volunteer groups. Please consider creating a pollinator garden in your own yard or business. We will be expanding on these gardens soon.

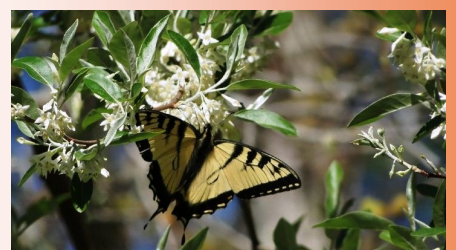
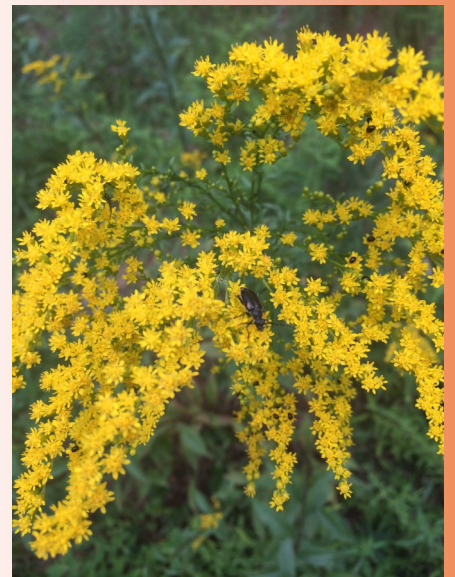
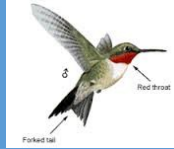
Goldenrod blooming at Pickerel Cove Pollinator Garden (above). Not to be confused with ragweed that also blooms this time of year. Ragweed is wind pollinated with deeply lobed leaves, whereas goldenrod is insect pollinated, and its leaves are unlobed (below).





# “FIND THE POLLINATOR!”

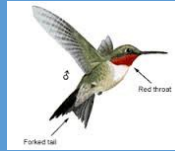
(answers next page)





# “FIND THE POLLINATOR!”

ANSWERS:



BUMBLEBEE



MILKWEED BEETLE



SWEAT BEE



HONEYBEE



MONARCH



BUMBLEBEE



BLISTER BEETLE



EASTERN TIGER SWALLOWTAIL