

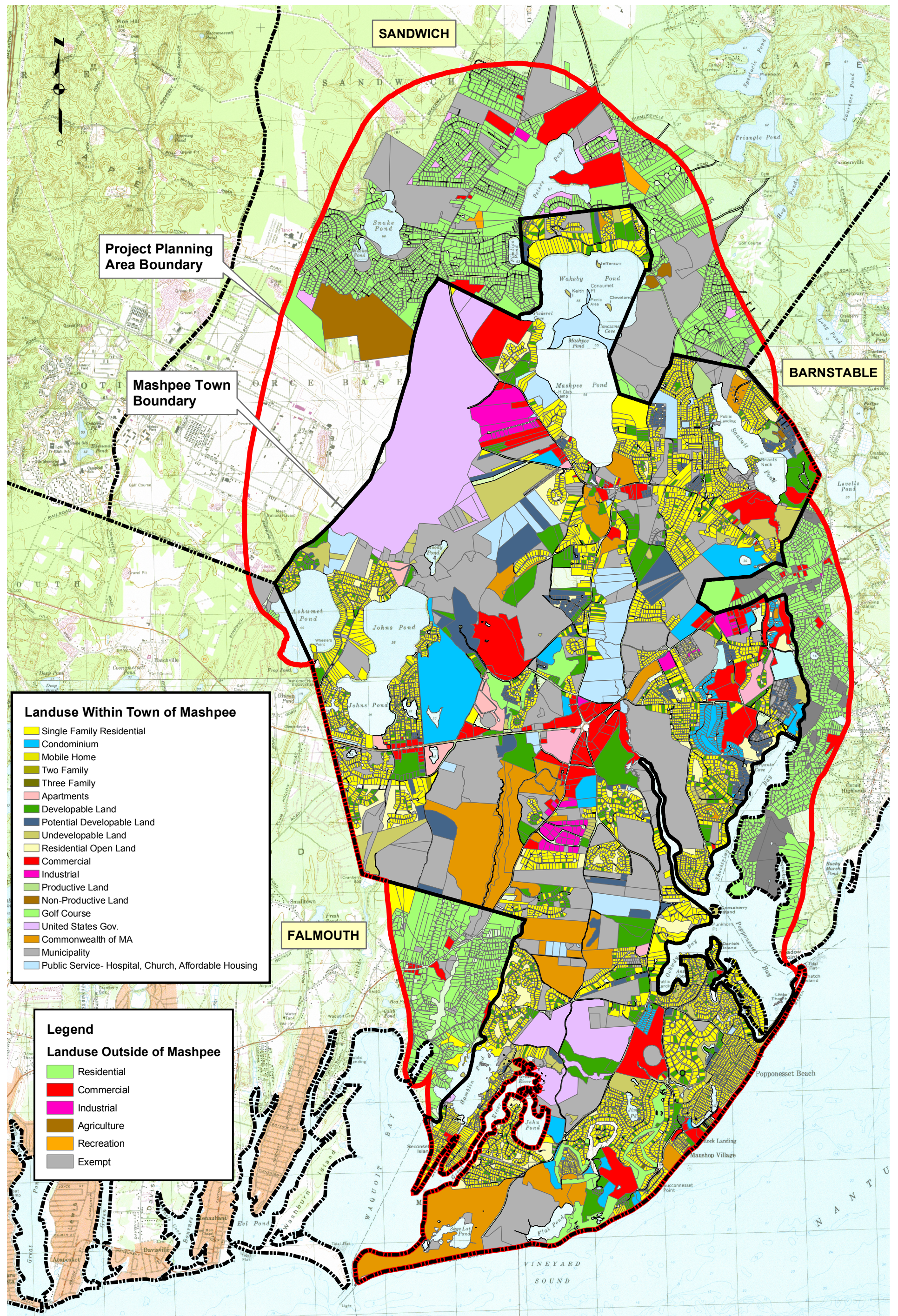
Data Source: Mass GIS/Town of Mashpee GIS Dept.
 File Location: J:\GIS\GIS Project Folder\Job#\n00074 Mashpee\2006 WWFP\Report Figures\00074F05-9openspace.mxd

Stearns & Wheler, LLC
 Environmental Engineers and Scientists
 HYANNIS, MASSACHUSETTS
 phone: (508) 362-6800
 web: www.stearnswheler.com

Date: 04/2007 Project No. 00074

TOWN OF MASHPEE, MASSACHUSETTS
Watershed Nitrogen Management Plan
Mashpee Open Space Incentive Plan

FIGURE 5-8



planning zones.

B. Town Zoning

As of 2007, the Town of Mashpee was divided into the following zoning districts: Residential (R-3, R-5), Commercial (C-1, C-2, C-3), and Industrial (I-1). These districts are presented in Figure 5-11, along with the zoning designations (designated by the respective towns) for the portions of the neighboring towns.

5.4 TOWN DEMOGRAPHICS

A. **Current Population.** U.S. census data indicates that Mashpee's year round population was 12,946 in 2000. CCC also reports Cape Cod population estimates (from the U.S. Census Bureau) in its newsletter *Cape Cod Commission REPORTER*. The August 5, 2004 edition reported population estimates for Mashpee as follows:

TABLE 5-2
POPULATION ESTIMATES FOR TOWN OF MASHPEE

Year	Population
2001	13,500
2002	13,939
2003	14,200

In addition, the U.S. Census Bureau issued 2004 population estimates on June 30, 2005. Mashpee's estimated population was 14,301. This represents a 10.5% population increase since 2000, making Mashpee the fastest-growing town on Cape Cod. Population statistics are only reported for Mashpee because it is the only town of the four towns in the PPA that is entirely within the PPA.

B. **Seasonal Population.** The 2000 U.S. census indicated that 33% of the housing units in Mashpee are designated as seasonal, recreational, or occasional use. This results in summer

populations that are significantly higher than the year-round population. Estimates generated for the Town's Local Comprehensive Plan indicated seasonal populations ranging from 27,000 to 31,000.