

1



2



# MASHPEE ROTARY

## CORRIDOR STUDY PROJECT SUMMARY

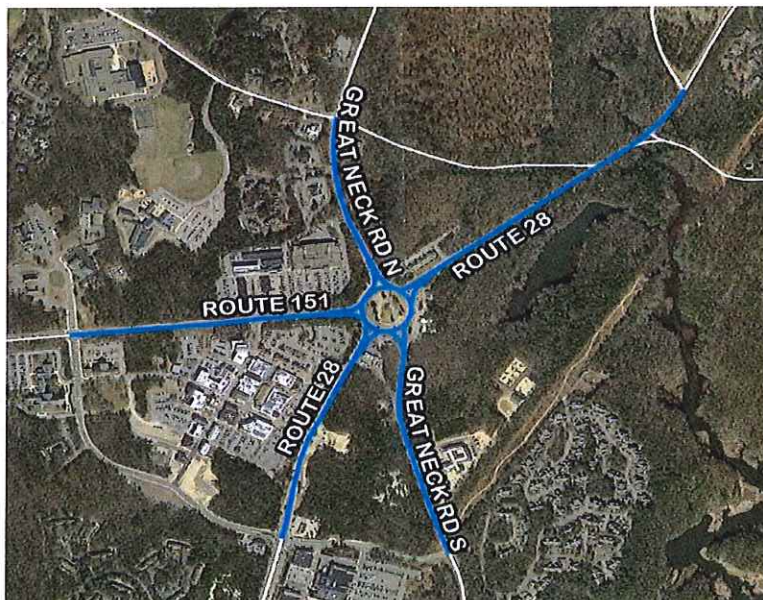


### BACKGROUND

This study is funded by the Massachusetts Department of Transportation through the Federal Fiscal Year 2019 Unified Planning Work Program as approved by the Cape Cod Metropolitan Organization

3

### STUDY AREA



4

## PROJECT GOALS

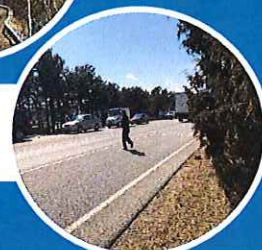
Improve Safety



Reduce Congestion



Accommodate All Users



5

## PROJECT OVERVIEW

Develop alternatives that will provide **safe** and convenient access within the study area for all users of the roadway system including pedestrians, bicyclists, transit users, and motorists.



6



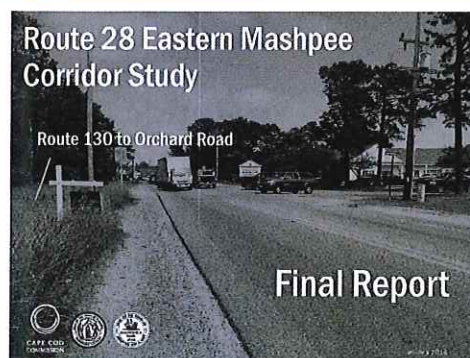
## PROJECT SCHEDULE

Task	Product	MAY-JAN '19	FEB	MAR	APR	MAY	JUN	JUL	AUG	SEP	OCT
Task 1: Project Initiation	SOW & PPP		◆								
Task 2: Data Collection, Mapping, and Site Visit	Data and Maps for Other Tasks										
Task 3: Listening Session	Summary of Listening Session			◆	◆						
Task 4: Concept Development and Refinement	Concepts for Public Meeting										
Task 5: Public Review of Concepts	Summary of Public Meeting							◆	◆		
Task 6: Draft and Final Report	Draft and Final Report									◆	
		◆ - Coordination Meeting(s)    ◆ - Public Meeting(s)									

7

## OTHER PROJECTS

- Route 28 Eastern Mashpee Study (CCC)
- Route 151 Corridor Improvements (Town/MassDOT)
- Route 28 at Donna's Lane Signal Improvements (MassDOT)
- Regional Transportation Plan (RTP) Outreach
- Land Use and Zoning Discussions



8

## ROUTE 28 EASTERN MASHPEE Route 130 to Orchard Road

Completed January 2018 by Cape Cod Commission

Recommendations included:

- Sidewalk or multi-use path on Route 28
- Left-turn pockets
- Bus stop upgrades
- Consideration of Bowdoin Road roundabout/traffic signal



9

## ROUTE 151 CORRIDOR IMPROVEMENTS

Roadway Safety Audit (April 2018)

- Route 151 at Job's Fishing Road/Frank E Hicks Drive

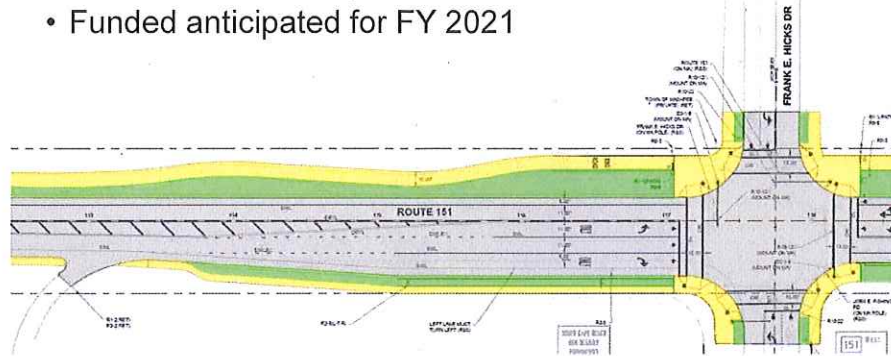


10

# ROUTE 151 CORRIDOR IMPROVEMENTS

MassDOT/Town of Mashpee design project

- From Falmouth town line to Market Street
- 25% Design Public Hearing on March 21, 2019
- Funded anticipated for FY 2021

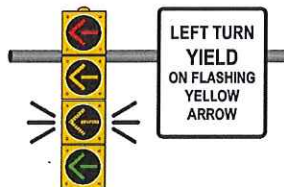


11

# Route 28 at Jobs Fishing Rd Signal Improvements

MassDOT project

- Flashing Yellow Arrow Upgrades
- Pedestrian Signal Head Countdown Heads
- Curb Ramp upgrades



12



## 2020 REGIONAL TRANSPORTATION PLAN

Outreach meetings Feb 2019

- Eastham, Mashpee and Hyannis

25-Year Regional Vision

- Goals
- Objectives
- Performance Measures
- Policies and Strategies



Additional Outreach Meetings

- May/June 2019

<http://www.capecodcommission.org/RTP>

13

## 2018 CAPE COD REGIONAL POLICY PLAN

- Vision for the Future
  - Protect the region's natural resources to provide vital ecosystems services
  - Focus economic revitalization in existing centers of activity
- Identification of Community Activity Centers



NATURAL AREAS

RURAL DEVELOPMENT AREAS

SUBURBAN DEVELOPMENT AREAS

HISTORIC AREAS

MARITIME AREAS

COMMUNITY ACTIVITY CENTERS

INDUSTRIAL ACTIVITY CENTERS

MILITARY AND TRANSPORTATION AREAS



14

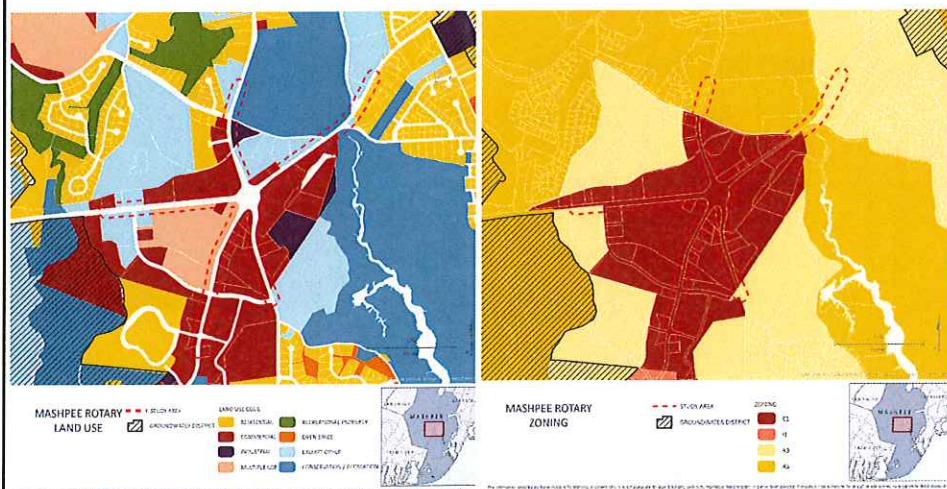
## LAND USE PLANNING ↔ TRANSPORTATION PLANNING



**REGIONAL POLICY PLAN ↔  
REGIONAL TRANSPORTATION PLAN**

15

## LAND USE AND ZONING



16



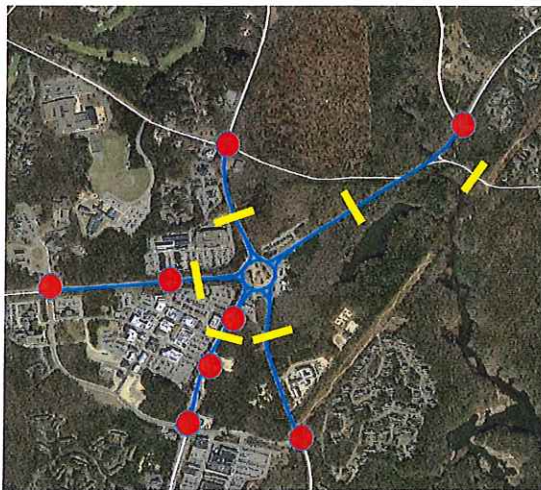


## EXISTING CONDITIONS

- Site Visit
- Data Collection
  - Traffic Counts
  - Multi-Modal Accommodations
  - Crash Reports

17

## DATA COLLECTION



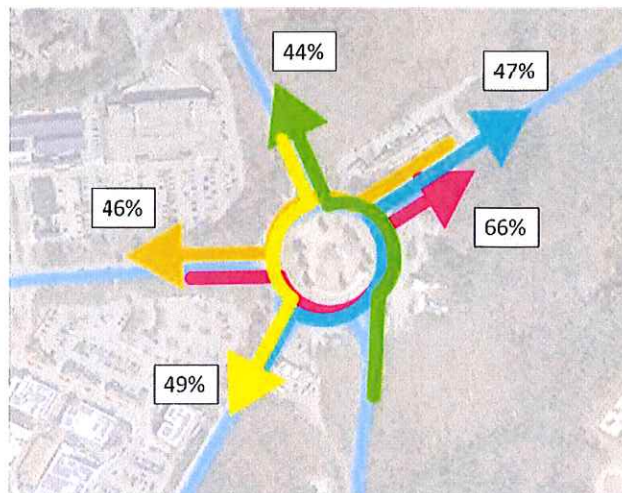
Traffic Counts – Summer 2018

— Average Daily Traffic counts (ADT)

● Intersection Counts (4-6PM)

18

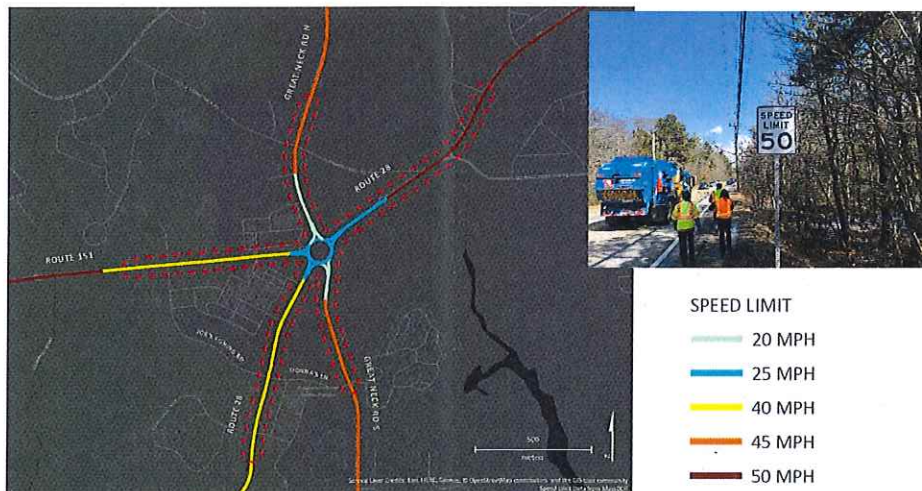
## ROTARY MOVEMENTS



Origin-  
Destination  
Study  
(PM Peak Hour)

19

## SPEED LIMITS



20



## OPEN SPACE, WETLANDS, AND HISTORIC PROPERTIES



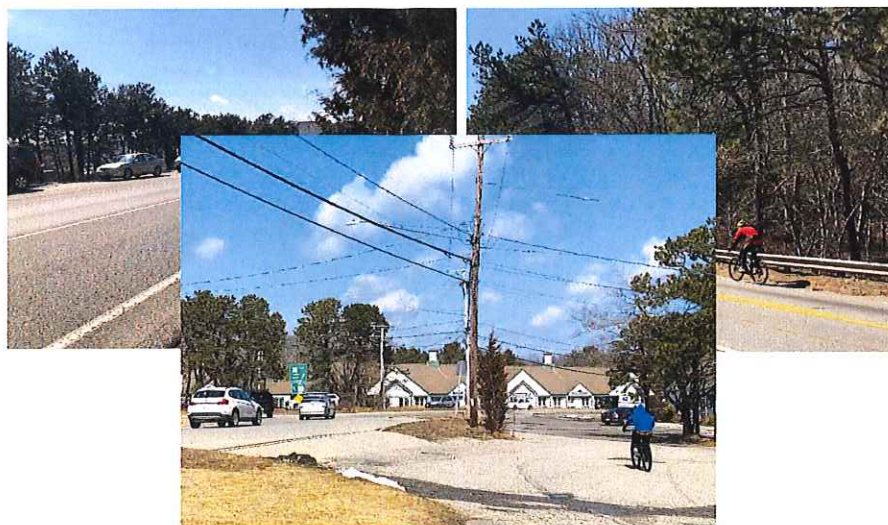
21

## EXISTING CONDITIONS: MULTI-MODAL ACCOMODATIONS



22

## EXISTING CONDITIONS: BIKE/PED ACCOMODATIONS



23

## EXISTING CONDITIONS: BIKE/PED ACCOMODATIONS



24



## EXISTING CONDITIONS: TRANSIT

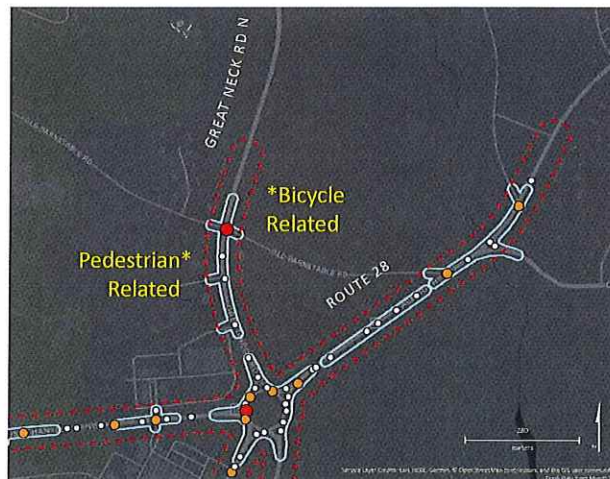
- Cape Cod Regional Transit Authority
  - Sealine (Falmouth - Hyannis)
  - Bourne Run (Wareham – Mashpee)
- Others



25

## EXISTING CONDITIONS: SAFETY

MassDOT Crash Data (2012-2016)



CRASH COUNT

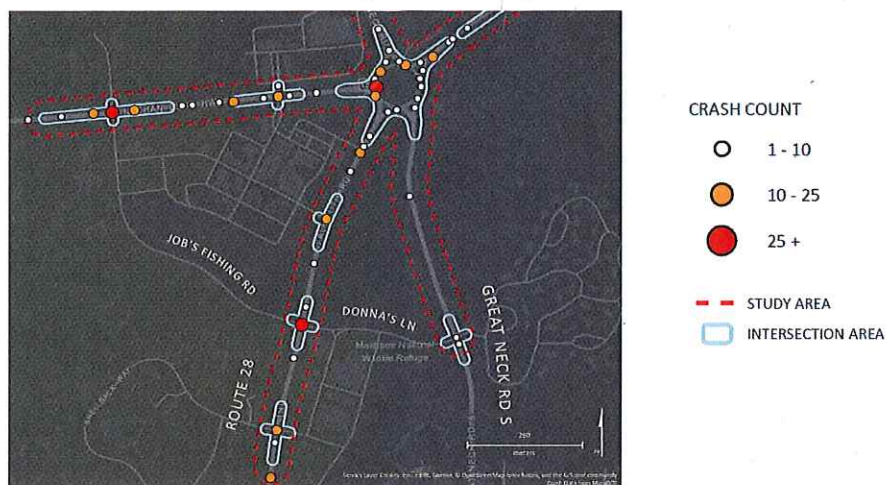
- 1 - 10
- 10 - 25
- 25 +

--- STUDY AREA  
--- INTERSECTION AREA

26

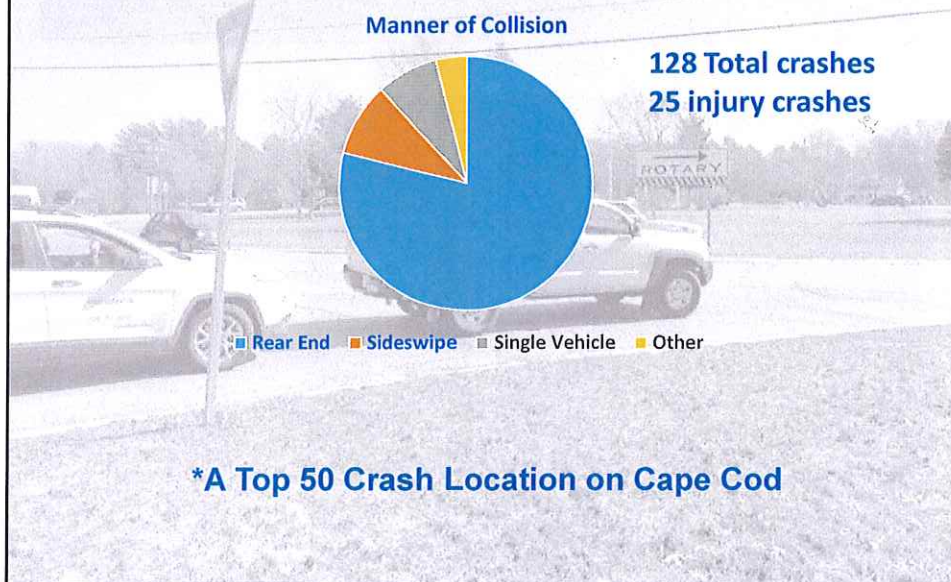
## EXISTING CONDITIONS: SAFETY

MassDOT Crash Data (2012-2016)



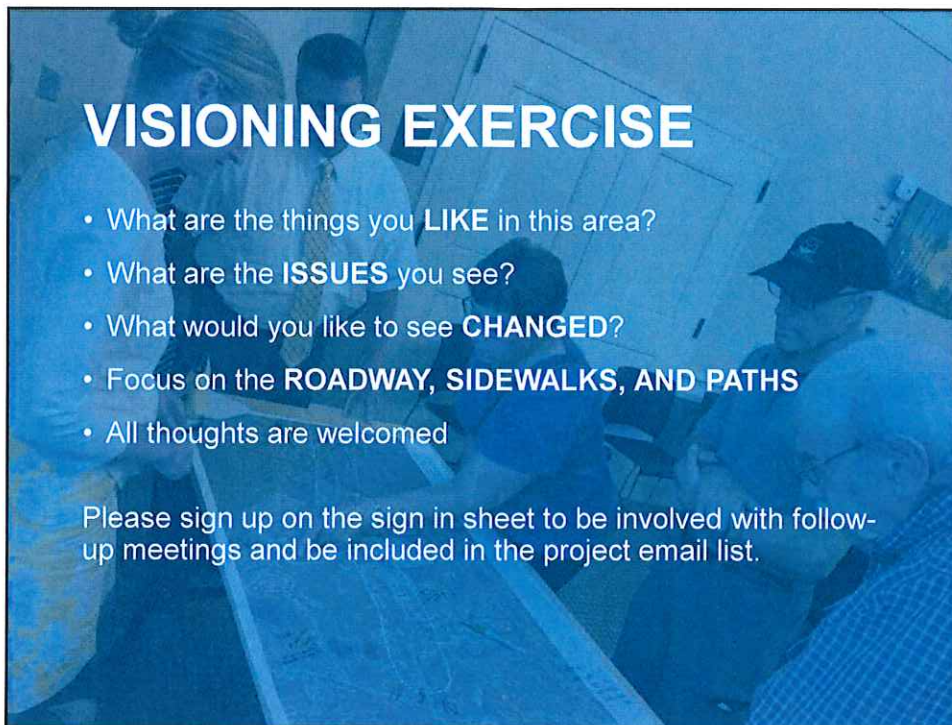
27

## Mashpee Rotary Crashes



28



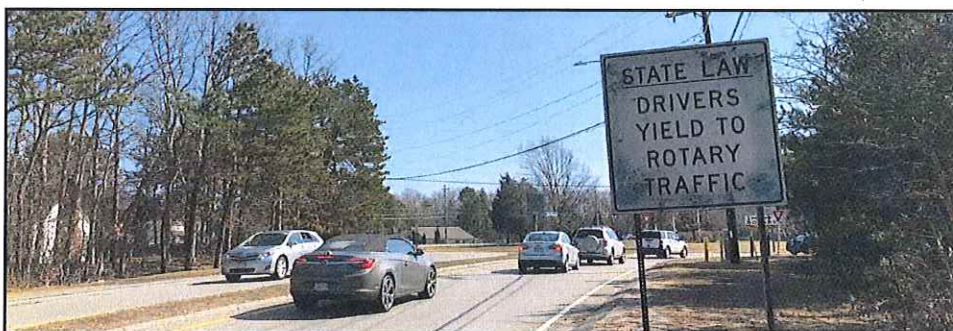


## VISIONING EXERCISE

- What are the things you **LIKE** in this area?
- What are the **ISSUES** you see?
- What would you like to see **CHANGED**?
- Focus on the **ROADWAY, SIDEWALKS, AND PATHS**
- All thoughts are welcomed

Please sign up on the sign in sheet to be involved with follow-up meetings and be included in the project email list.

29



## NEXT STEPS

- Review and Summarize Input from Today's Meeting
- Concept Development and Analysis  
Summer 2019
- Public Meeting: Review of Draft Concepts  
Late Summer/Early Fall 2019
- Draft and Final Report  
Fall 2019

30



**THANK YOU**

For more information  
[www.capecodcommission.org/MashpeeRotary](http://www.capecodcommission.org/MashpeeRotary)

Steven Tupper Transportation Program Manager <a href="mailto:stupper@capecodcommission.org">stupper@capecodcommission.org</a> 508.362.3828	Colleen Medeiros Transportation Engineer <a href="mailto:colleen.medeiros@capecodcommission.org">colleen.medeiros@capecodcommission.org</a> 508.362.3828
---	---