

**Mashpee Shellfishing Map
Waquoit Bay Area
July 12, 2017**



Falmouth side of Waquoit Bay closed to shellfishing November 15 to April 30 except open for scalloping October 1 to March 31 (Town of Falmouth management closure)

Waquoit Bay

Hamblin Pond

Jehu Pond

Falmouth
Mashpee

Seconset Island Rd

Little River

Great River

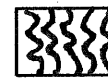
Great River Town Landing

Great Oak Rd

Sedge Lot
Pond



No Shellfishing
Contaminated



No Shellfishing
May 1 to
October 31



Family Area
No Commercial
Shellfishing



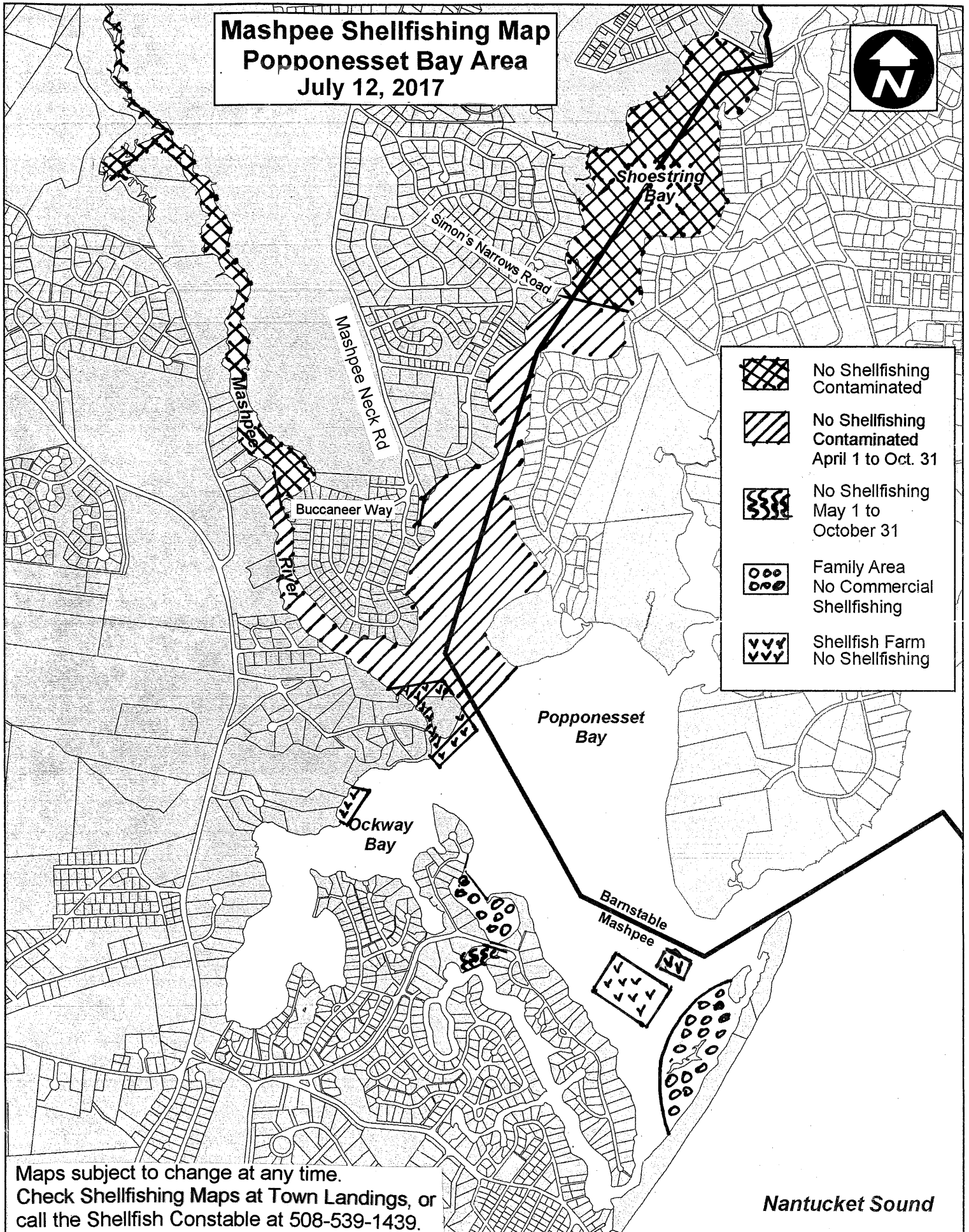
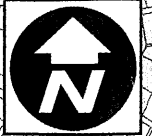
Shellfish Farm
No Shellfishing




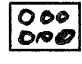

Nantucket Sound

More info at: www.mashpeema.gov/shellfish

Maps subject to change at any time.
Check Shellfishing Maps at Town Landings, or
call the Shellfish Constable at 508-539-1439.

Mashpee Shellfishing Map
Popponesset Bay Area
 July 12, 2017



-  No Shellfishing Contaminated
-  No Shellfishing Contaminated April 1 to Oct. 31
-  No Shellfishing May 1 to October 31
-  Family Area No Commercial Shellfishing
-  Shellfish Farm No Shellfishing

Maps subject to change at any time.
 Check Shellfishing Maps at Town Landings, or
 call the Shellfish Constable at 508-539-1439.

Nantucket Sound

More info at: www.mashpeema.gov/shellfish