



## NOTICE #2 – AUGUST 23, 2023

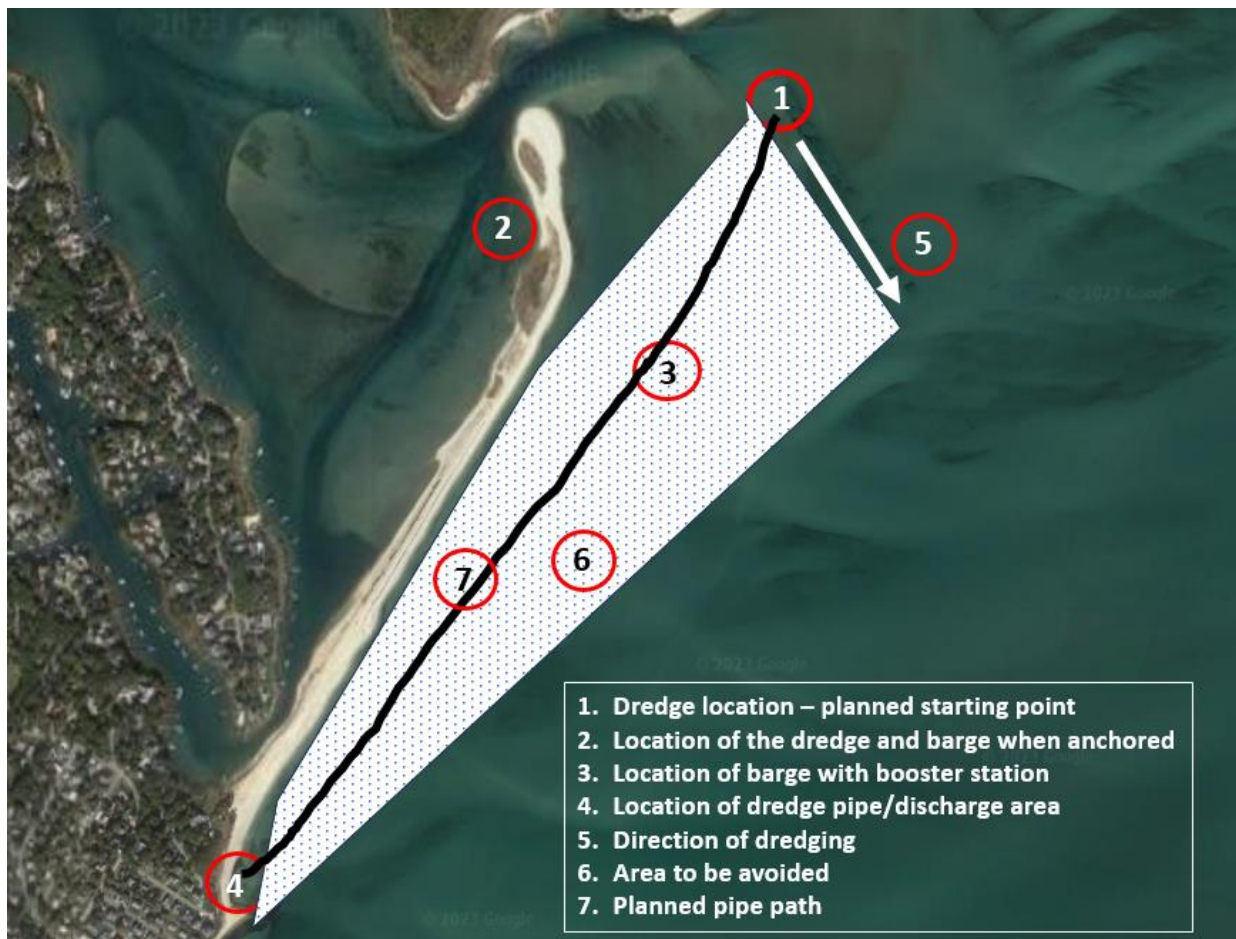
### POPPONESSET APPROACH CHANNEL - DREDGING UPDATE

REFERENCE THE GRAPHIC BELOW/ALL POSITIONS ARE APPROXIMATE: MOBILIZING CONTINUES AND THE COUNTY DREDGE COD FISH II AND BARGE WITH BOOSTER STATION ABOARD ARE ANCHORED ON THE NORTH SIDE OF THE SPIT. 3,000' OF DREDGE PIPE WILL BE ON SITE TODAY (8/23/23) AND 3,500' OF DREDGE PIPE WILL BE ON SITE TOMORROW (8/24/23).

THESE TWO SECTIONS OF PIPE WILL RUN FROM THE DREDGE, TO THE BARGE/BOOSTER STATION AND ONTO THE DISCHARGE LOCATION.

THERE WILL BE TIMES WHEN THE DREDGE AND BARGE ARE NOT ON LOCATION AND THE PIPE WILL BE SECURED TO A PONTOON. THE DREDGE, BARGE AND PONTOON WILL HAVE AN ANCHOR LIGHT DISPLAYED DURING NIGHTTIME HOURS AND THE PIPE WILL BE MARKED EVERY 300' WITH ORANGE FLOATS.

BOATERS ARE ADVISED TO AVOID THE AREA HIGHLIGHTED BELOW AS THE WATER DEPTHS ARE SHALLOW AND THE RISK OF STRIKING THE PIPE IS VERY HIGH. BOATERS ARE URGED TO EXERCISE EXTREME CAUTION WHEN NAVIGATING IN THE CHANNEL AREA AND TO ALWAYS KEEP TO THE EAST OF THE DREDGE/PONTOON. VHF CH. 18 IS OUR WORKING CHANNEL AND CH. 13 & 16 ARE ALWAYS MONITORED.



#### CONTACTS:

KEN CIRILLO, COUNTY DREDGE DIRECTOR, AT 508.375.3655 OR VIA EMAIL AT [KENNETH.CIRILLO@CAPECOD.GOV](mailto:KENNETH.CIRILLO@CAPECOD.GOV) OR ROBERT TOMAINO, HARBORMASTER, AT 508.539.1410 OR VIA EMAIL AT [RTOMAINO@MASHPEEMA.GOV](mailto:RTOMAINO@MASHPEEMA.GOV)