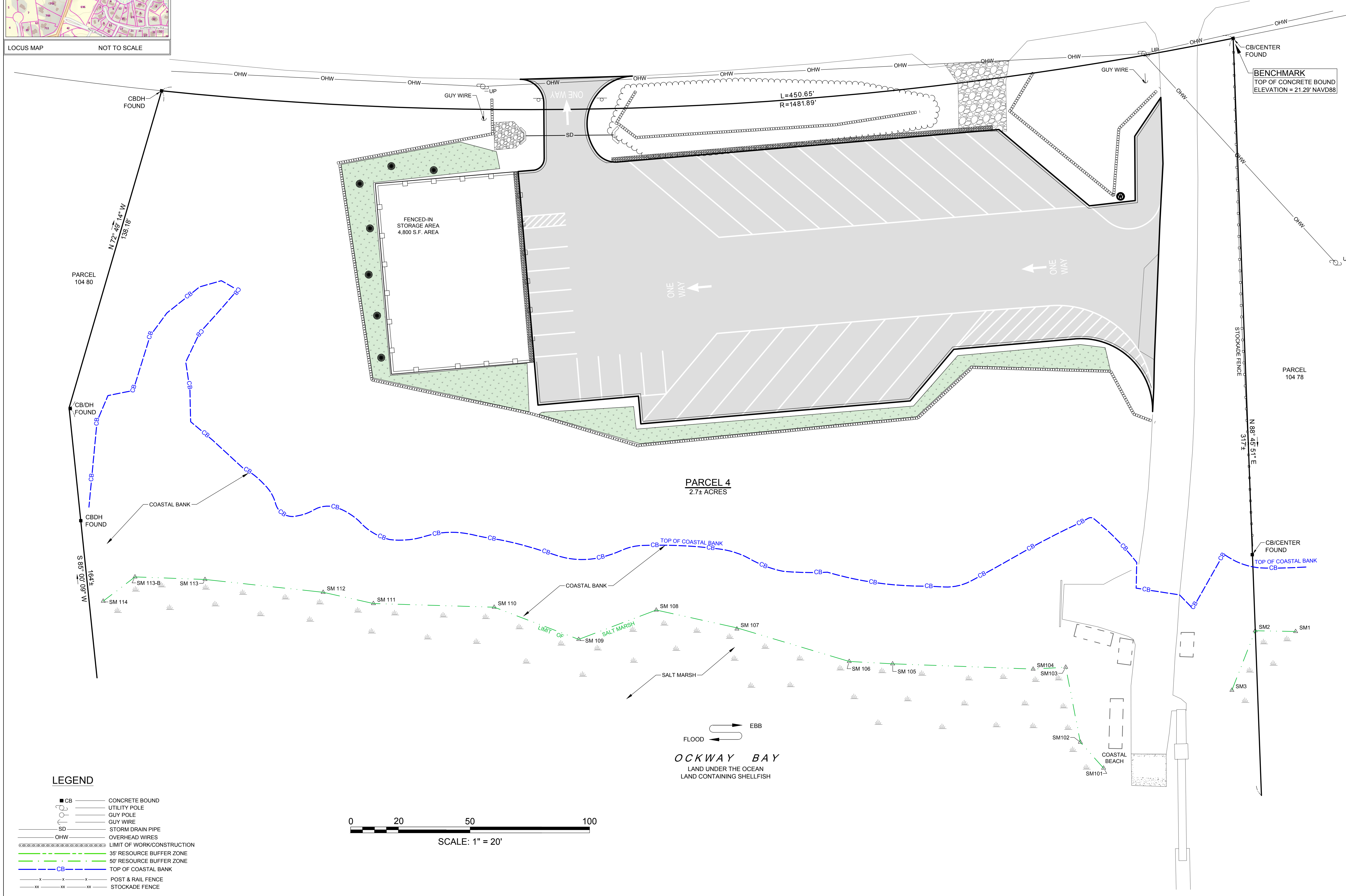


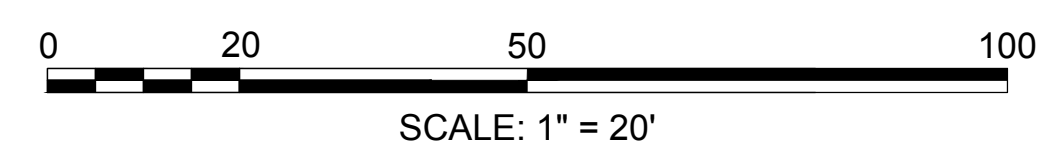
GREAT NECK ROAD SOUTH
(60' WIDE - PUBLIC)



BENCHMARK
TOP OF CONCRETE BOUND
ELEVATION = 21.29' NAVD88

LEGEND

■ CB	CONCRETE BOUND
○ UP	UTILITY POLE
○	GUY POLE
—	GUY WIRE
—	STORM DRAIN PIPE
—	OVERHEAD WIRES
—	LIMIT OF WORK/CONSTRUCTION
—	35' RESOURCE BUFFER ZONE
—	50' RESOURCE BUFFER ZONE
—	TOP OF COASTAL BANK
—	POST & RAIL FENCE
—	STOCKADE FENCE



NOTICE
THIS PLAN MAY NOT BE ADDED TO, DELETED FROM, OR ALTERED IN ANY WAY BY ANYONE OTHER THAN CAPE & ISLANDS ENGINEERING, INC.
UNLESS AND UNTIL SUCH TIME AS AN ORIGINAL (RED) STAMP APPEARS ON THIS PLAN NO PERSON OR PERSONS, MUNICIPAL OR PUBLIC OFFICIAL MAY RELY UPON THE INFORMATION CONTAINED HEREIN, AND THIS PLAN REMAINS THE PROPERTY OF CAPE & ISLANDS ENGINEERING, INC.
COPYRIGHT (C) BY CAPE & ISLANDS ENGINEERING, INC. ALL RIGHTS RESERVED

DATE	DESCRIPTION	BY	CHK
OWNER OF RECORD: TOWN OF MASHPEE 16 GREAT NECK ROAD NORTH MASHPEE, MA 02649			
APPLICANT: TOWN OF MASHPEE 16 GREAT NECK ROAD NORTH MASHPEE, MA 02649			
PROJECT: 664 GREAT NECK ROAD SOUTH IN MASHPEE, MASSACHUSETTS			

SHEET NO.: 1 OF 1	DATE: JANUARY 18, 2019
DRAWING FILE NAME: GREATNECKSOUTH_664_TOWNOFMASHPEE_SP	
DRAWN BY: RLR	CHECKED BY: MC
PREPARED BY:	

CAPE & ISLANDS ENGINEERING
CIVIL ENGINEERING - LAND SURVEYING - ENVIRONMENTAL PERMITTING

SUMMERFIELD PARK
800 FALMOUTH ROAD SUITE 301C
MASHPEE, MA 02649

508.477.7272 PHONE
508.477.9072 FAX
info@CapeEng.com
www.CapeEng.com

DRAWING TITLE:
PROPOSED PARKING LOT IMPROVEMENTS
SITE PLAN - GRAPHIC LAYOUT

ASSESSORS INFORMATION: MAP 104 PARCEL 79